



APE Single Acting Diesel Impact Hammer

THE WORLD'S LARGEST PILEDRIVERS

Model D19-52

SPECIFICATIONS

| | |
|-------------------------------------------------------------|---------------------------|
| Stroke at Maximum Rated Energy | 135 in (343 cm) |
| Maximum Rated Energy (Setting 4) | 47,126 ft-lbs (63.89 kNm) |
| (Setting 3) | 39,115 ft-lbs (53.03 kNm) |
| (Setting 2) | 31,103 ft-lbs (42.17 kNm) |
| Minimum Rated Energy (Setting 1) | 23,092 ft-lbs (31.31 kNm) |
| <i>(VARIABLE THROTTLE ALLOWS FOR INFINITE FUEL SETTING)</i> | |
| Maximum Obtainable Stroke | 150 in (381 cm) |
| Maximum Obtainable Energy | 52,363 ft-lbs (71 kNm) |
| Speed (Blows Per Minute) | 34-52 |

WEIGHTS (APPROXIMATE)

| | |
|------------------------------------------------------|--------------------------------------------------|
| Piston | 4,189 lbs (1,900 kg) |
| Anvil | 749 lbs (340 kg) |
| Anvil Cross Sectional Area | 124.42 in ² (802.71 cm ²) |
| Hammer Weight (Includes Trip Device) | 10,000 lbs (4,536 kg) |
| Typical Operating (Weight With DB26 & H-Beam insert) | 12,652 lbs (5,739 kg) |

CAPACITIES

| | |
|------------------------------------------|----------------------|
| Fuel Tank (Runs on Diesel or Bio-Diesel) | 8.3 Gal (31 Liters) |
| Oil Tank | 2.3 Gal (8.7 Liters) |

CONSUMPTION

| | |
|----------------------|---------------------------------------------------|
| Diesel or Bio-Diesel | 1.3 Gal/hr (6.6 Liters/hr) |
| Oil Tank | 0.13 Gal/hr (.49 Liters/hr) |
| Grease | 8 to 10 Pumps Every 20 Minutes of Operation Time. |

STRIKER PLATE FOR DB26

| | |
|-----------|-------------------------------------------------|
| Weight | 628 lbs (284 kg) |
| Diameter | 22.5 in (57.15 cm) |
| Area | 398 in ² (2,567.74 cm ²) |
| Thickness | 6 in (15.24 cm) |

STRIKER PLATE FOR DB20

| | |
|-----------|-------------------------------------------------|
| Weight | 440 lbs (199 kg) |
| Diameter | 17.75 in (45 cm) |
| Area | 247 in ² (1,593.55 cm ²) |
| Thickness | 6 in (15.24 cm) |

CUSHION MATERIAL

| | |
|-----------------------|---------------------|
| Type | Monocast MC 904 |
| Diameter-DB26 | 22.5 in (57.15 cm) |
| Diameter-DB20 | 17.75 in (45.08 cm) |
| Thickness | 2 in (5.08 cm) |
| Elastic-Modulus | 285 ksi (1,965 mpa) |
| Coeff. of Restitution | 0.8 |

DRIVE CAP

| | |
|--------|--------------------|
| DB 26: | 1,076 lbs (488 kg) |
| DB 20: | 750 lbs (340 kg) |

INSERT WEIGHT

| | |
|------------------------------------------------------|--------------------|
| H-Beam Insert for 12" (305mm) and 14" (355 mm): | 948 lbs (430 kg) |
| Large Pipe Insert for the Sizes 12" to 24" Diameter: | 1,830 lbs (830 kg) |

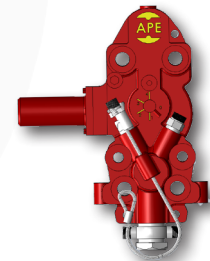
MINIMUM LEADER SIZE/OPERATING LENGTH

| | |
|-------------------------------------|------------------------------------|
| Minimum Box Leader Size | 8 in x 21 in (20.32 cm x 53.34 cm) |
| Operating Length as Described Above | 348 in (883.92 cm) |

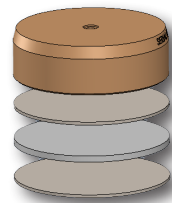


Image may not represent actual Model

Optional Variable Throttle Control



Drive Base Assembly



Striker plate
Aluminum
Micarta
Aluminum
Drive Cap Base

