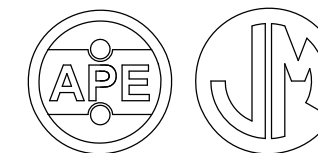


AMERICAN
PILEDRIVING
EQUIPMENT



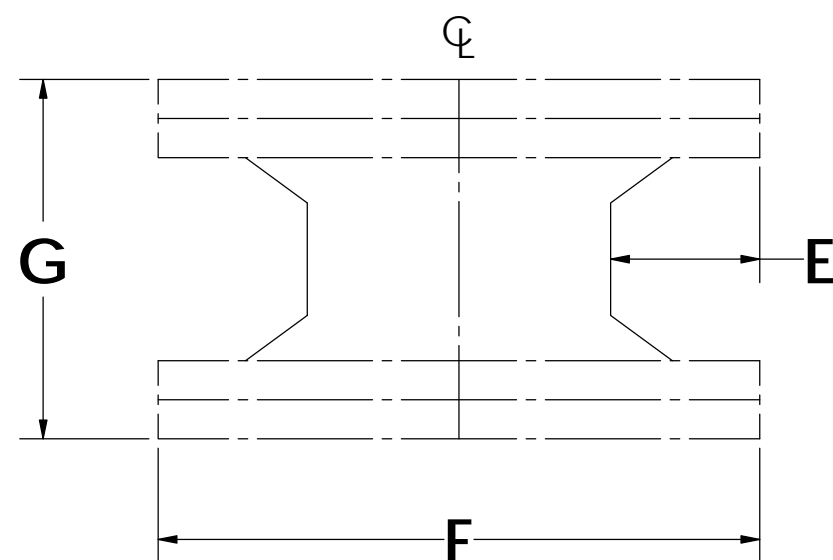
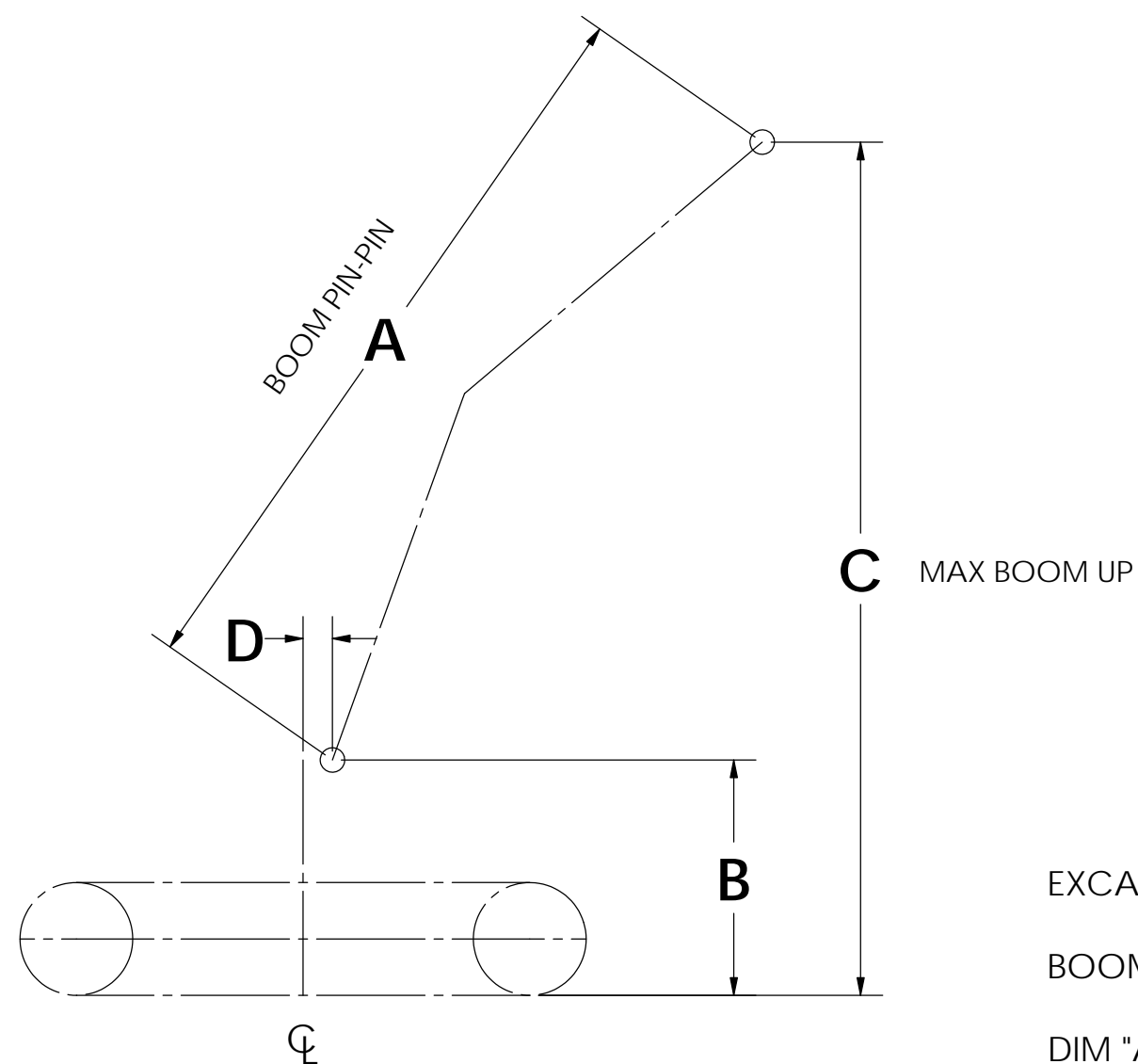
7032 S. 196TH ST.
KENT, WA 98032
1-800-248-8498
www.apevibro.com

TOLERANCES
EXCEPT AS NOTED

.X = ± .060
.XX = ± .030
.XXX = ± .010
FRAC = ± 1/16
ANGLE = ± .25°

PROPRIETARY AND CONFIDENTIAL

THE INFORMATION CONTAINED IN THIS
DRAWING IS THE SOLE PROPERTY OF
AMERICAN PILEDRIVING EQUIPMENT (APE).
ANY REPRODUCTION IN PART OR WHOLE
WITHOUT THE WRITTEN PERMISSION OF APE
IS PROHIBITED. THE APE PRODUCT LINE IS
PROTECTED BY VARIOUS PATENTS. FOR A
LIST OF PATENTS, PLEASE VISIT OUR WEBSITE
www.apevibro.com/ver2/apepatents.asp



EXCAVATOR TYPE _____

BOOM TYPE (REACH, MASS) _____

DIM "A" _____

DIM "B" _____

DIM "C" _____

DIM "D" _____

DIM "E" _____

DIM "F" _____

DIM "G" _____

(ALL DIMENSIONS TO NEAREST 1")

DATE	APPR.	BY	REVISION	SYM

PRODUCT/PROJECT:
Excavator - Direct
Hookup

DESCRIPTION:
Reference Dimensions

MATERIAL:

DRAWN BY:	DATE:	WEIGHT (LB):	SIZE:
			B
PART NO:	REV:	SHEET	OF
		1	1