



www.apevibro.com

SERVICE BULLETIN

VIBRATORY HAMMERS • POWER UNITS/AUGER SYSTEMS • DIESEL & HYDRAULIC HAMMERS
DRILL RIGS • HYDRAULIC PILING RIGS • WICK DRAIN INSTALLERS • LEAD SYSTEMS

Jun. 09, 2016



www.jandm-usa.com

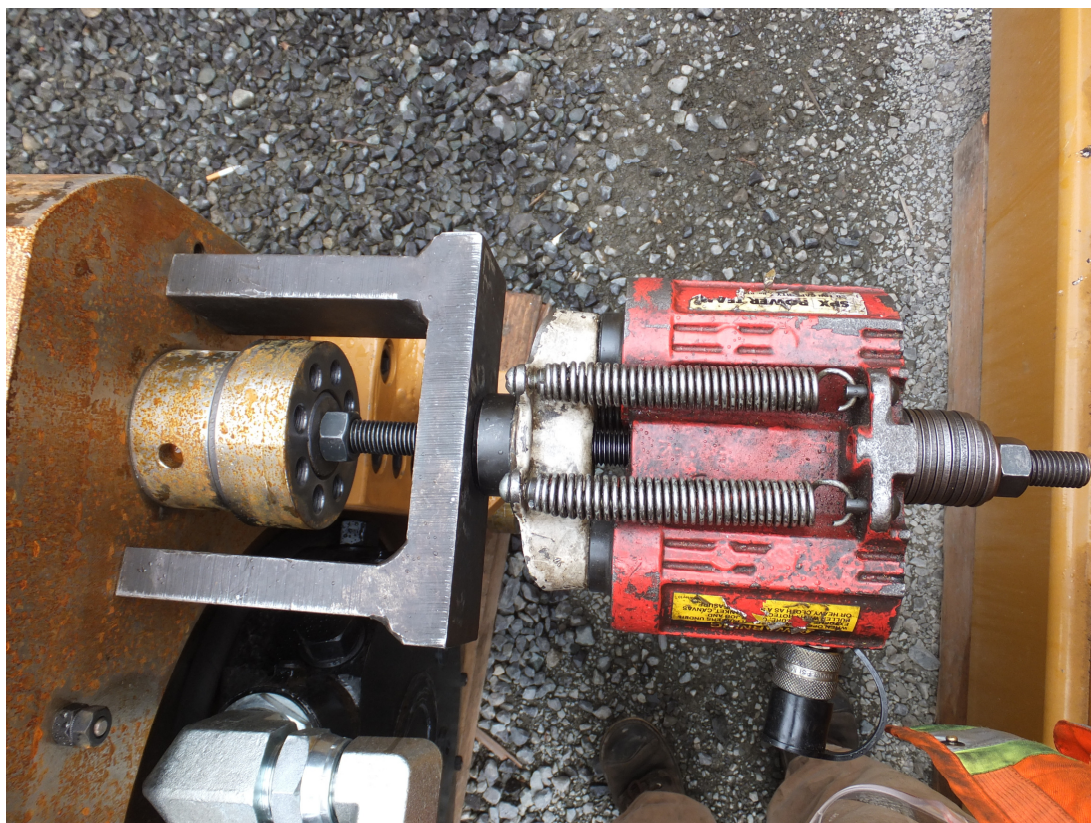
31 HIH Rope/Cylinder Specifications

Today we are addressing the specifications on HIH rope tensions, and the cylinder pressures to reach these correct tensions.

The ropes are going to be addressed first, they are stretched in two steps.

1. Tension ropes:
 - a. Pull rope 1 to **HALF** of the required tons see Fig. 1.
 - b. Continue pulling ropes 2 thru 4 the same.
 - c. Pull rope 1 to **FULL** tons
 - d. Continue pulling ropes 2 thru 4 the same.

Fig.1



APE HEADQUARTERS

7032 S 196TH STREET
KENT, WA 98032
(800) 248-8498 • (253) 872-0141
FAX (253) 872-8710

NORTHEAST REGIONAL OFFICE

401 HARTLE ST.
SAYREVILLE, NJ 08872
(888) 217-7524 • (732) 432-6604
FAX (732) 432-6608

APE CHINA

BUILDING No. 233, FU QIAO ROAD
GU CUN INDUSTRIAL ZONE BAOSHAN DISTRICT
SHANGHAI, CHINA 201906
011-86-21-5677-1221
FAX 011-86-21-3604-0553

LOUISIANA REGIONAL OFFICE

39266 A DOYLE DRIVE
GONZALES, LA 70737
(225) 644-7722
FAX (225) 644-7626

GULF REGIONAL OFFICE

3975 FM Hwy 1485
CONROE, TX 77306
(800) 596-2877 • (936) 271-1044
FAX (936) 271-1046

MID-ATLANTIC REGIONAL OFFICE

500 NEWTON ROAD, #200
VIRGINIA BEACH, VA 23462
(866) 399-7500 • (757) 518-9740
FAX (757) 518-9741

SOUTHEAST REGIONAL OFFICE

1345 INDUSTRIAL PARK ROAD
MULBERRY, FL 33860
(800) 570-3844 • (863) 324-0378
FAX (863) 318-9409

MID-WESTERN REGIONAL OFFICE

50 GERBER INDUSTRIAL DR.
ST. PETERS, MO 63376
(877) 296-8044 • (636) 397-8400
FAX (636) 278-4278

WESTERN REGIONAL OFFICE

2985 LOOMIS ROAD
STOCKTON, CA 95205
(888) 245-4401 • (209) 942-2166
FAX (209) 942-2455



www.apevibro.com

SERVICE BULLETIN

VIBRATORY HAMMERS • POWER UNITS/AUGER SYSTEMS • DIESEL & HYDRAULIC HAMMERS
 DRILL RIGS • HYDRAULIC PILING RIGS • WICK DRAIN INSTALLERS • LEAD SYSTEMS



www.jandm-usa.com

The below chart gives the needed pull or tension for each model of H.I.H. rope in tons.

The chart is also a quick reference for the cylinder P.S.I. Make sure to check the model of cylinder you are using. RT172 or RT302.

1 OF 1		REV: 6-8-16		PRE-LOAD	
17 TON RAM			30 TON RAM		
HAMMER	INSTALLED ROPE PRE-LOAD, TONS	"POWER-TWIN" CYL. MODEL	PRESSURE, PSI	"POWER-TWIN" CYL. MODEL	PRESSURE, PSI
70 HIH	8	RT172	4533	RT302	2560
115 HIH	12	RT172	6800	RT302	3820
160 HIH	15	RT172	8500	RT302	4775
220 HIH	15	RT172	8500	RT302	4775
275 HIH	30	RT302	9554		
DASH 2 HIH	10	RT172	5667	RT302	3183
DASH 3 HIH	10	RT172	5667	RT302	3183
DASH 4 HIH	15	RT172	8500	RT302	4775
MATERIAL:			SCALE: 1: 1		
DWN. BY: LCH	DATE: 5-8-00	HIH	DESCRIPTION PRE-LOAD TABLE	VIEW	FOUNDATION EQUIPMENT LLC PITTSBURGH, PENNSYLVANIA

APE HEADQUARTERS
 7032 S 196TH STREET
 KENT, WA 98032
 (800) 248-8498 • (253) 872-0141
 Fax (253) 872-8710

NORTHEAST REGIONAL OFFICE
 401 HARTLE ST.
 SAYREVILLE, NJ 08872
 (888) 217-7524 • (732) 432-6604
 Fax (732) 432-6608

APE CHINA
 BUILDING NO. 233, FU QIAO ROAD
 GU CUN INDUSTRIAL ZONE BAOSHAN DISTRICT
 SHANGHAI, CHINA 201906
 011-86-21-5677-1221
 Fax 011-86-21-3604-0553

LOUISIANA REGIONAL OFFICE
 39266 A DOYLE DRIVE
 GONZALES, LA 70737
 (225) 644-7722
 Fax (225) 644-7626

GULF REGIONAL OFFICE
 3975 FM HWY 1485
 CONROE, TX 77306
 (800) 596-2877 • (936) 271-1044
 Fax (936) 271-1046

MID-ATLANTIC REGIONAL OFFICE
 500 NEWTON ROAD, #200
 VIRGINIA BEACH, VA 23462
 (866) 399-7500 • (757) 518-9740
 Fax (757) 518-9741

SOUTHEAST REGIONAL OFFICE
 1345 INDUSTRIAL PARK ROAD
 MULBERRY, FL 33860
 (800) 570-3844 • (863) 324-0378
 Fax (863) 318-9409

MID-WESTERN REGIONAL OFFICE
 50 GERBER INDUSTRIAL DR.
 ST. PETERS, MO 63376
 (877) 296-8044 • (636) 397-8400
 Fax (636) 278-4278

WESTERN REGIONAL OFFICE
 2985 LOOMIS ROAD
 STOCKTON, CA 95205
 (888) 245-4401 • (209) 942-2166
 Fax (209) 942-2455



SERVICE BULLETIN

VIBRATORY HAMMERS • POWER UNITS AUGER SYSTEMS • DIESEL & HYDRAULIC HAMMERS
 DRILL RIGS • HYDRAULIC PILING RIGS • WICK DRAIN INSTALLERS • LEAD SYSTEMS



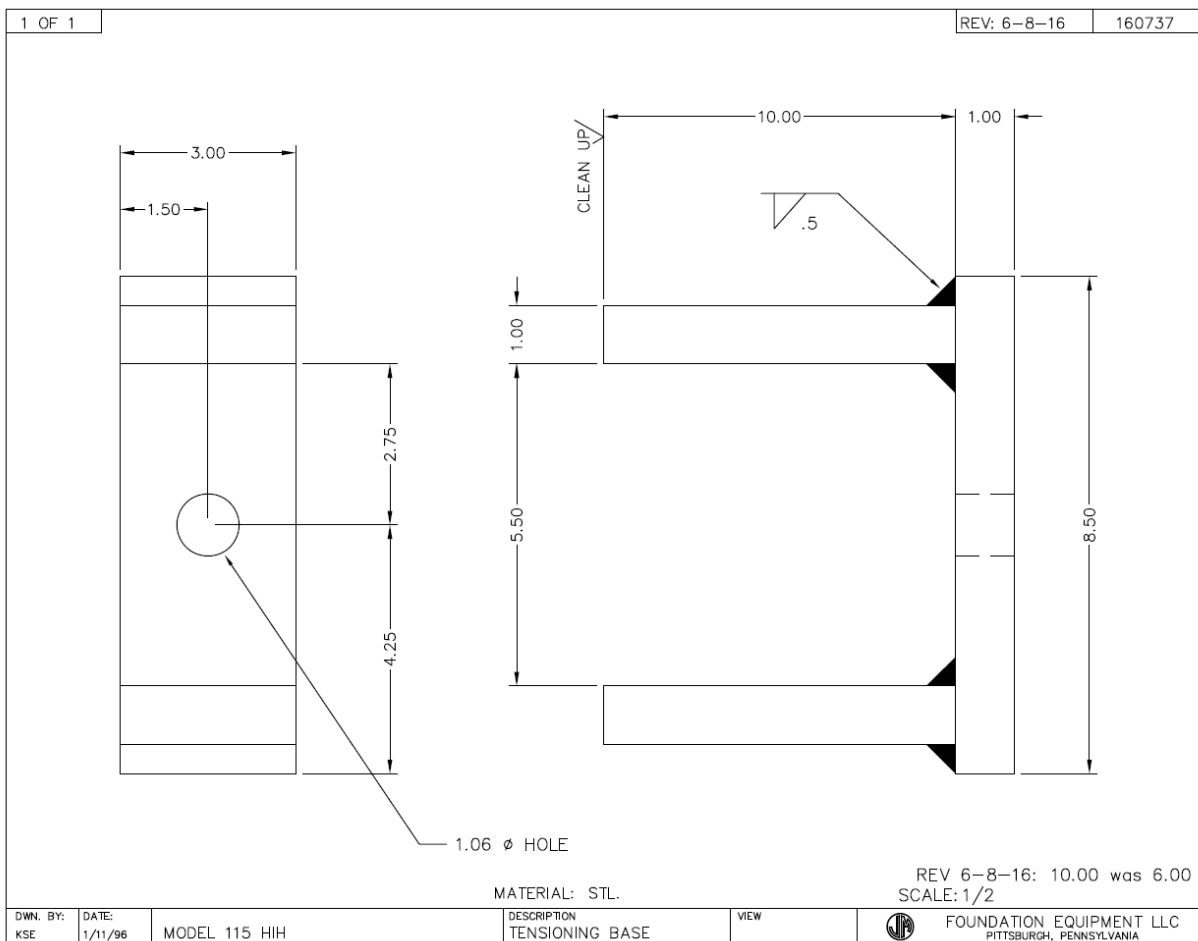
www.apevibro.com

www.jandm-usa.com

Below is the drawing for the tensioning base if you need to make one.

It is also an inventory item.

160737 Wire Rpe Tensiong Base-115 HIH



APE HEADQUARTERS
 7032 S 196TH STREET
 KENT, WA 98032
 (800) 248-8498 • (253) 872-0141
 FAX (253) 872-8710

NORTHEAST REGIONAL OFFICE
 401 HARTLE ST.
 SAYREVILLE, NJ 08872
 (888) 217-7524 • (732) 432-6604
 FAX (732) 432-6608

APE CHINA
 BUILDING NO. 233, FU QIAO ROAD
 GU CUN INDUSTRIAL ZONE BAOSHAN DISTRICT
 SHANGHAI, CHINA 201906
 011-86-21-5677-1221
 FAX 011-86-21-3604-0553

LOUISIANA REGIONAL OFFICE
 39266 A DOYLE DRIVE
 GONZALES, LA 70737
 (225) 644-7722
 FAX (225) 644-7626

GULF REGIONAL OFFICE
 3975 FM HWY 1485
 CONROE, TX 77306
 (800) 596-2877 • (936) 271-1044
 FAX (936) 271-1046

MID-ATLANTIC REGIONAL OFFICE
 500 NEWTON ROAD, #200
 VIRGINIA BEACH, VA 23462
 (866) 399-7500 • (757) 518-9740
 FAX (757) 518-9741

SOUTHEAST REGIONAL OFFICE
 1345 INDUSTRIAL PARK ROAD
 MULBERRY, FL 33860
 (800) 570-3844 • (863) 324-0378
 FAX (863) 318-9409

MID-WESTERN REGIONAL OFFICE
 50 GERBER INDUSTRIAL DR.
 ST. PETERS, MO 63376
 (877) 296-8044 • (636) 397-8400
 FAX (636) 278-4278

WESTERN REGIONAL OFFICE
 2985 LOOMIS ROAD
 STOCKTON, CA 95205
 (888) 245-4401 • (209) 942-2166
 FAX (209) 942-2455