



www.apevibro.com

TECHNICAL BULLETIN

VIBRATORY HAMMERS • POWER UNITS AUGER SYSTEMS • DIESEL & HYDRAULIC HAMMERS
DRILL RIGS • HYDRAULIC PILING RIGS • WICK DRAIN INSTALLERS • LEAD SYSTEMS



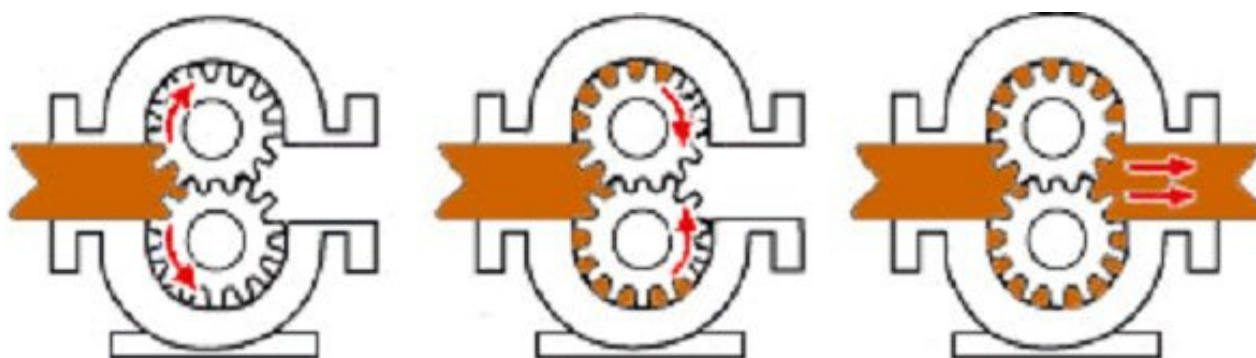
www.jandm-usa.com

#1 How To Determine Gear Pump Flow And Displacement

Today we will be covering how to determine gear pump flow, and displacement.

Let's first cover how a gear pump works. The oil enters the gear pump from the (Inlet) tank and travels around the outside of the gear and forced out of the pressure port. **See IMG.1**

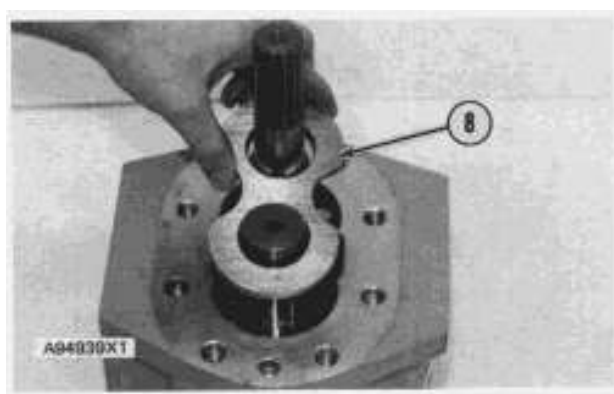
IMG.1



There are 2 each brass side pressure plates that are 1/4" thick on both sides of the gear. These keep the oil retained in the teeth from the side. **See IMG.2,3**

IMG.2

IMG.3



APE HEADQUARTERS
7032 S 196TH STREET
KENT, WA 98032
(800) 248-8498 • (253) 872-0141
FAX (253) 872-8710

NORTHEAST REGIONAL OFFICE
401 HARTLE ST.
SAYREVILLE, NJ 08872
(888) 217-7524 • (732) 432-6604
FAX (732) 432-6608

APE CHINA
BUILDING NO. 233, FU QIAO ROAD
GU CUN INDUSTRIAL ZONE BAOSHAN DISTRICT
SHANGHAI, CHINA 201906
011-86-21-5677-1221
FAX 011-86-21-3604-0553

LOUISIANA REGIONAL OFFICE
39266 A DOYLE DRIVE
GONZALES, LA 70737
(225) 644-7722
FAX (225) 644-7626

GULF REGIONAL OFFICE
3975 FM HWY 1485
CONROE, TX 77306
(800) 596-2877 • (936) 271-1044
FAX (936) 271-1046

MID-ATLANTIC REGIONAL OFFICE
500 NEWTON ROAD, #200
VIRGINIA BEACH, VA 23462
(866) 399-7500 • (757) 518-9740
FAX (757) 518-9741

SOUTHEAST REGIONAL OFFICE
1345 INDUSTRIAL PARK ROAD
MULBERRY, FL 33860
(800) 570-3844 • (863) 324-0378
FAX (863) 318-9409

MID-WESTERN REGIONAL OFFICE
50 GERBER INDUSTRIAL DR.
ST. PETERS, MO 63376
(877) 296-8044 • (636) 397-8400
FAX (636) 278-4278

WESTERN REGIONAL OFFICE
2985 LOOMIS ROAD
STOCKTON, CA 95205
(888) 245-4401 • (209) 942-2166
FAX (209) 942-2455



www.apevibro.com

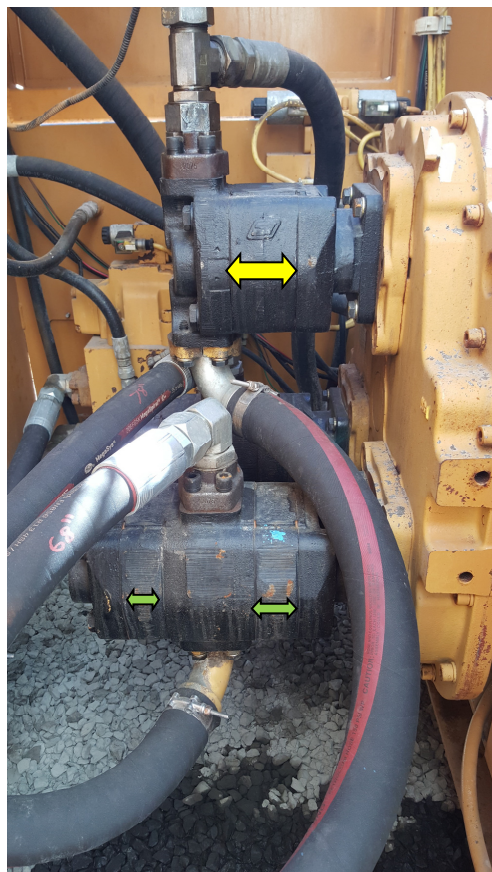
TECHNICAL BULLETIN

VIBRATORY HAMMERS • POWER UNITS/AUGER SYSTEMS • DIESEL & HYDRAULIC HAMMERS
DRILL RIGS • HYDRAULIC PILING RIGS • WICK DRAIN INSTALLERS • LEAD SYSTEMS



www.jandm-usa.com

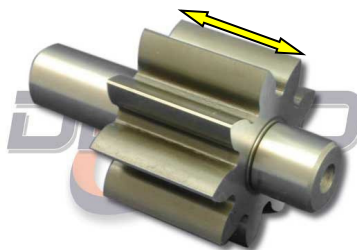
When you measure the pump section you will have to subtract $\frac{1}{2}$ " because of the two $\frac{1}{4}$ " side pressure plates. Yellow arrow. **See IMG.4**



IMG.4

Looking at IMG.4, if the yellow arrow measures 2" the gear section is $1\frac{1}{2}$ ". **See IMG.5**

IMG.5



WWW.DEFEOMFG.COM

To figure out what gear section you have inside the pump you will need to know the model of pump that is being used.

We generally use a P465 model pump for our 4500 P.S.I. hydraulic circuits. We are accustomed to using the pump code as the call out. **See IMG.6 Chart.** If you measure a P465 pump at a 2" outside section like in IMG.4, it would be a code (15) and have a displacement of 5.4 cubic inches. **See IMG.6 Chart. (The cubic inches is how much oil the pump will put out with 1 rotation.)**

We can now measure all the drive pump sizes and combine them to figure out what the displacement is for the drive circuit. As an example, a 765 P/U paired with a 200-6 vibro has 4 each (15)'s and 1 each (7) size drive pumps that are the P465 model.

APE HEADQUARTERS

7032 S 196TH STREET
KENT, WA 98032
(800) 248-8498 • (253) 872-0141
FAX (253) 872-8710

NORTHEAST REGIONAL OFFICE

401 HARTLE ST.
SAYREVILLE, NJ 08872
(888) 217-7524 • (732) 432-6604
FAX (732) 432-6608

APE CHINA

BUILDING NO. 233, FU QIAO ROAD
GU CUN INDUSTRIAL ZONE BAOSHAN DISTRICT
SHANGHAI, CHINA 201906
011-86-21-5677-1221
FAX 011-86-21-3604-0553

LOUISIANA REGIONAL OFFICE

39266 A DOYLE DRIVE
GONZALES, LA 70737
(225) 644-7722
FAX (225) 644-7626

GULF REGIONAL OFFICE

3975 FM HWY 1485
CONROE, TX 77306
(800) 596-2877 • (936) 271-1044
FAX (936) 271-1046

MID-ATLANTIC REGIONAL OFFICE

500 NEWTON ROAD, #200
VIRGINIA BEACH, VA 23462
(866) 399-7500 • (757) 518-9740
FAX (757) 518-9741

SOUTHEAST REGIONAL OFFICE

1345 INDUSTRIAL PARK ROAD
MULBERRY, FL 33860
(800) 570-3844 • (863) 324-0378
FAX (863) 318-9409

MID-WESTERN REGIONAL OFFICE

50 GERBER INDUSTRIAL DR.
ST. PETERS, MO 63376
(877) 296-8044 • (636) 397-8400
FAX (636) 278-4278

WESTERN REGIONAL OFFICE

2985 LOOMIS ROAD
STOCKTON, CA 95205
(888) 245-4401 • (209) 942-2166
FAX (209) 942-2455



TECHNICAL BULLETIN

VIBRATORY HAMMERS • POWER UNITS/AUGER SYSTEMS • DIESEL & HYDRAULIC HAMMERS
DRILL RIGS • HYDRAULIC PILING RIGS • WICK DRAIN INSTALLERS • LEAD SYSTEMS



www.apevibro.com

www.jandm-usa.com

We know that a (15) is 5.4 cubic inches and a (7) is 2.7 cubic inches by using **IMG.6 Chart**

See the below math on how to add the pumps together.

5.4 X 4 = 21.6 + 2.7 = 24.3 cubic inches total.

We now know that we have 24.3 cubic inches' total volume for our drive pumps.

The pump drive on the 765 P/U is a 1:1 gear ratio. The max engine R.P.M. is 2050.

We can now figure out the GPM that the P/U puts out. Using the **IMG.6 Chart** formula for Pump Output (GPM). **See IMG.6 Orange Arrow.**

See the math formula below for the 765 P/U.

Pump Output (GPM)

$$\frac{2050 \times 24.3}{231} = 215.65 \text{ GPM}$$

Above we can see that a 765 P/U running at 2050 R.P.M. with a standard configuration of drive pumps will produce 215.65 GPM.

We will be addressing how pump efficiency comes into play with this formula in an upcoming technical bulletin.

IMG. 6 Chart on next page.

APE HEADQUARTERS

7032 S 196TH STREET
KENT, WA 98032
(800) 248-8498 • (253) 872-0141
FAX (253) 872-8710

NORTHEAST REGIONAL OFFICE

401 HARTLE ST.
SAYREVILLE, NJ 08872
(888) 217-7524 • (732) 432-6604
FAX (732) 432-6608

APE CHINA

BUILDING NO. 233, FU QIAO ROAD
GU CUN INDUSTRIAL ZONE BAOSHAN DISTRICT
SHANGHAI, CHINA 201906
011-86-21-5677-1221
FAX 011-86-21-3604-0553

LOUISIANA REGIONAL OFFICE

39266 A DOYLE DRIVE
GONZALES, LA 70737
(225) 644-7722
FAX (225) 644-7626

GULF REGIONAL OFFICE

3975 FM HWY 1485
CONROE, TX 77306
(800) 596-2877 • (936) 271-1044
FAX (936) 271-1046

MID-ATLANTIC REGIONAL OFFICE

500 NEWTON ROAD, #200
VIRGINIA BEACH, VA 23462
(866) 399-7500 • (757) 518-9740
FAX (757) 518-9741

SOUTHEAST REGIONAL OFFICE

1345 INDUSTRIAL PARK ROAD
MULBERRY, FL 33860
(800) 570-3844 • (863) 324-0378
FAX (863) 318-9409

MID-WESTERN REGIONAL OFFICE

50 GERBER INDUSTRIAL DR.
ST. PETERS, MO 63376
(877) 296-8044 • (636) 397-8400
FAX (636) 278-4278

WESTERN REGIONAL OFFICE

2985 LOOMIS ROAD
STOCKTON, CA 95205
(888) 245-4401 • (209) 942-2166
FAX (209) 942-2455



TECHNICAL BULLETIN

VIBRATORY HAMMERS • POWER UNITS/AUGER SYSTEMS • DIESEL & HYDRAULIC HAMMERS
 DRILL RIGS • HYDRAULIC PILING RIGS • WICK DRAIN INSTALLERS • LEAD SYSTEMS



www.apevibro.com

www.jandm-usa.com

Commercial Intertech Youngstown, Ohio 44501 U.S.A.		DISPLACEMENT (d) PUMP/MOTOR													© 1991 Commercial Intertech Corp.	
PUMP MODEL SERIES	15H 15X	30 31	50/51 25X	87X	75 76	125	P315	P330	P350	P365	P415	P430	P450	P465		
DISPLACEMENT (d) PER IN. OF GEAR WIDTH	1.37 in ³ /Rev	1.97 in ³ /Rev	2.55 in ³ /Rev	3.00 in ³ /Rev	4.10 in ³ /Rev	6.47 in ³ /Rev	1.24 in ³ /Rev	1.97 in ³ /Rev	2.55 in ³ /Rev	3.60 in ³ /Rev	1.24 in ³ /Rev	1.97 in ³ /Rev	2.55 in ³ /Rev	3.60 in ³ /Rev		
MAXIMUM RECOMMENDED PRESSURE	2000- 2500 PSI	2500- 3000 PSI	2000- 3000 PSI	2000 PSI	2500- 3000 PSI	2500 PSI	3000- 3500 PSI	3000- 3500 PSI	3000- 3500 PSI	3000- 3500 PSI	4000- 4500 PSI	4000- 4500 PSI	4000- 4500 PSI	4000- 4500 PSI		
GEAR SIZE	CODE	d	d	d	d	d	d	d	d	d	d	d	d	d		
1/2	(05)	.685	.985	1.275	1.500	2.050	3.230	.620	.985	1.275	1.800	.620	.985	1.275	1.800	
3/4	(07)	1.027	1.470	1.912	2.250	3.070	4.850	.930	1.470	1.912	2.700	.930	1.470	1.912	2.700	
1	(10)	1.370	1.970	2.550	3.000	4.100	6.470	1.240	1.970	2.550	3.600	1.240	1.970	2.550	3.600	
1-1/4	(12)	1.712	2.460	3.187	3.750	5.120	8.080	1.550	2.460	3.187	4.500		2.460	3.187	4.500	
1-1/2	(15)	2.050	2.950	3.820	4.500	6.150	9.700	1.860	2.950	3.820	5.400				5.400	
1-3/4	(17)	2.397	3.440	4.460	5.250	7.170	11.320	2.170	3.440	4.460	6.300					
2	(20)	2.740	3.940	5.100	6.000	8.200	12.940	2.480	3.940	5.100	7.200					
2-1/4	(22)			5.730	6.750	9.220	14.550			5.730	8.100					
2-1/2	(25)			6.375	7.500	10.250	16.170			6.375	9.000					
2-3/4	(27)					11.275										
3	(30)				9.000	12.300										

GENERAL FORMULAS

MOTOR SPEED (R.P.M.) Speed = $\frac{231 \times \text{GPM}}{d} = \text{RPM}$	MOTOR TORQUE IN INCH POUNDS $\frac{\text{PSI} \times d \times \text{Efficiency}}{2\pi} = T$	PUMP OUTPUT (GPM) $\frac{\text{RPM} \times d}{231} = \text{GPM}$	PUMP INPUT (HP reqd.) $\frac{\text{GPM} \times \text{PSI}}{1714 \times \text{Eff.}} = \text{HP}$
HORSEPOWER TORQUE (in.lbs.) \times RPM = HP 63025	FLOW RATE THRU PIPING $\frac{.3208 \times \text{GPM}}{\text{AREA (PIPE I.D.)}} = V$	"D" SERIES = 2.36 PER 1" OF GA	



APE HEADQUARTERS

7032 S 196TH STREET
 KENT, WA 98032
 (800) 248-8498 • (253) 872-0141
 Fax (253) 872-8710

NORTHEAST REGIONAL OFFICE

401 HARTLE ST.
 SAYREVILLE, NJ 08872
 (888) 217-7524 • (732) 432-6604
 Fax (732) 432-6608

APE CHINA

BUILDING NO. 233, FU QIAO ROAD
 GU CUN INDUSTRIAL ZONE BAOSHAN DISTRICT
 SHANGHAI, CHINA 201906
 011-86-21-5677-1221
 Fax 011-86-21-3604-0553

LOUISIANA REGIONAL OFFICE

39266 A DOYLE DRIVE
 GONZALES, LA 70737
 (225) 644-7722
 Fax (225) 644-7626

GULF REGIONAL OFFICE

3975 FM HWY 1485
 CONROE, TX 77306
 (800) 596-2877 • (936) 271-1044
 Fax (936) 271-1046

MID-ATLANTIC REGIONAL OFFICE

500 NEWTON ROAD, #200
 VIRGINIA BEACH, VA 23462
 (866) 399-7500 • (757) 518-9740
 Fax (757) 518-9741

SOUTHEAST REGIONAL OFFICE

1345 INDUSTRIAL PARK ROAD
 MULBERRY, FL 33860
 (800) 570-3844 • (863) 324-0378
 Fax (863) 318-9409

MID-WESTERN REGIONAL OFFICE

50 GERBER INDUSTRIAL DR.
 ST. PETERS, MO 63376
 (877) 296-8044 • (636) 397-8400
 Fax (636) 278-4278

WESTERN REGIONAL OFFICE

2985 LOOMIS ROAD
 STOCKTON, CA 95205
 (888) 245-4401 • (209) 942-2166
 Fax (209) 942-2455